

AWARDS

ARCHITTEAM

AWARDS

AWARDS

2024

Founded in 1991 ArchiTeam Cooperative is a membership association for Australian architects working in small, medium and emerging practices.

We've been around for over 32 years but as we grow we see ArchiTeam Cooperative's unique role and importance in supporting small practice to thrive. ArchiTeam is democratically run by members, for members. Every member is encouraged to play an active part in shaping our organisation. With 1000 members nationally, we are the leading dedicated voice of Australia's small architectural practices.

Please note, the ArchiTeam Awards judging is held over two days. The jury view projects and judge the categories in their allocated day only. A juror may not enter a project into a category that they are judging.

For more information about ArchiTeam please go to our website architeam.net.au



ArchiTeam
Cooperative Ltd.
acknowledges
the Traditional
Custodians of the
land and waters
of Australia.

CONTENTS

Membership Benefits	4
Judges Panel	8
Medal Winners	12
Residential New	
Up to \$1.2M	20
Over \$1.2M	34
Residential Alterations and Additions	
Up to \$700K	46
\$700K to \$1.2M	68
Over \$1.2M	81
Commercial, Community & Public	88
Innovation & Contribution	108
Unbuilt	112
Thank you	116



ARCHITEAM MEMBERS BENEFITS

ArchiTeam Cooperative has been supporting architects in small, medium and emerging practices for 32 years. Since our founding, ArchiTeam has evolved to provide members with a wide range of professional development, support, networking and marketing opportunities, together with competitive insurance premiums.

With a growing national membership, the ArchiTeam community nurtures small practice architects, as well as collaborative work practices and skill sharing. We provide our members with essential member support services.

Our Mission

To empower and support small practice architects to thrive

Our Vision

ArchiTeam exists to provide benefits of co-operation to our members. By utilising our combined voices, we are able to support our members in their work and professional learning and raise the profile of our industry.

To achieve this mission, we will:



Promote and protect ArchiTeam and our members through education and activities

Advocate for the importance of small, medium and emerging architects in Australia

Assist the architecture community to connect and improve

**Members of
ArchiTeam enjoy
benefits including:**

Professional insurance

Protect your business with affordable PI and PL insurance. Fast obligation free quotes

Continuing Professional Development (CPD)

Earn points and keep up with the latest innovations, techniques and business practices at discounted member rates

ArchiTeam Awards

Showcase your work in the Awards. Free first entry for members. National publicity and Awards exhibition and opening night.

ArchiTeam Conference

Focused on the business of small practice architecture.

Business Support

Documents

Client Architect Agreements (free for all members), Employment Contracts and our WH&S Kit - tailored to the needs of small practices and all recently updated

Support

Be part of our members only online members discussion forum, with support from 1000+ members who understand what you're going through around the country

News

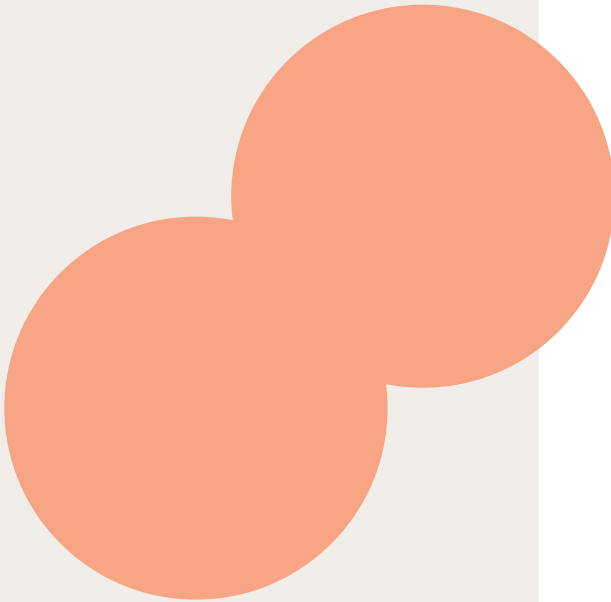
Receive our monthly e-newsletter, DATUM delivered straight to your inbox

Be heard

Get involved with the co-op and make the voice of small practitioners heard

If you are interested in joining ArchiTeam or would like further information, please visit architeam.net.au or email admin@architeam.net.au

ArchiTeam would like to thank our sponsors:



JUDGING PANEL



IMOGEN PULLAR

Awards Chair

Imogen is a Melbourne based architect with a focus on creating beautiful, comfortable, low energy healthy homes. Imogen brings together 17 years of architectural experience, with a passion for maximising impact for the environment.

We strive to design simply and directly for the fundamental aspects of life, while every design decision looks at minimising harm, protecting, and nurturing our environments – internal and external. Designing thermally comfortable, healthy homes that are energy efficient, with ethically sourced, low carbon materials and processes.

We make use of and enhance existing structures, or sensitively design new buildings that respect our natural and built environment. Every project is carefully managed to ensure it improves upon the past and supports future generations.

Imogen also has been a long standing member of the Architeam Advocacy Committee, and volunteers as a mentor to students at Melbourne University, inspiring others to be part of the climate solution.



JESSICA AGOSTON CLEARY

Jessica Agoston Cleary is the managing editor of *Australian Design Review (ADR)*, *Facility Management*, and *inside*. Originally from Tāmaki Makaurau Auckland, New Zealand, Agoston Cleary now lives in Melbourne. With a background in art and culture writing, and curating in both gallery settings and the public realm, Agoston Cleary has a honed eye for detail and creative artistry within architecture and design. Her academic background and experience in placemaking and community engagement projects informs her approach to considering architecture, which she believes is an artform in and of itself.



KIM BRIDGLAND

Kim Bridgland is a co-founder and Director of Melbourne based architect practice Edition Office. Through its design process, built work, research, writing and curatorial output, Edition Office seeks to pursue investigations into material, spatial and cultural practice. The studio works with a love of detail, and with an awareness and sensitivity towards the historical and cultural complexity that exists within the sites or context that their projects become manifest.

With a collaborative ethos, the team bring a maturity and depth of experience in the creation of experientially rich architecture. Combining research, physical form finding techniques and digital agility the studio seeks to create unique places with distinct identities. Within the first five years of practice, Edition Office has won numerous National and International awards including the 2019 Canberra Medallion, Dezeen Small Building of the year and Emerging Architect awards, HOUSES Emerging Architecture Practice, the Design Files Awards Emerging designer and the Kevin Borland, Cynthia Breheny and Nicholas Murcutt Awards for Small Project Architecture.

Kim demonstrates deep sensitivity, care and craftsmanship through his projects while maintaining a clear conceptual rigor. This sensitivity collects not only relationships to place, materiality and details, but also encompasses his relationship with clients and stakeholders. Kim understands insightful reading of people and place to deliver architecture which is experientially charged. His background as a fine artist and sculptor, alongside his knowledge of art and architectural history amplify his ability to create architecture which both connects with and challenges its inhabitants and visitors alike.



LARA MAESELE

Lara is an Associate Architect at Tanner Architects.

Her career began in London working on various RIBA Award winning projects after graduating with a Master of Architecture in Belgium.

Since arriving in Australia in 2012, she has been an integral member of Tanner Architects.

Lara's international design knowledge and experience from conceptual stage through to completion on site is evident in every project through a deep understanding of form and space. Her European background is evident in many of her designs.

Lara is a Registered Architect and her award winning work has gained recognition locally and internationally.



LAURA HARDING

Laura Harding is a Sydney-based designer and critic who has worked with the studio of Hill Thalys Architecture + Urban Projects since 1996. Her work encompasses a wide range of urban, multiple housing and architectural projects, many of which have received industry awards. Laura's architectural writing and criticism has been widely published in a range of architectural journals, news media and monographs, and she was awarded the Adrian Ashton Prize for architectural criticism in 2013.



MARK SIMPSON

Mark Simpson is the Joint Creative Director of DesignOffice, an interior and architectural design practice committed to delivering human-centred buildings and spaces that make a valuable and meaningful contribution to everyday life.

DesignOffice was established in 2008, and alongside co-Director Damien Mulvihill, Mark leads the team across a diverse portfolio of projects within the hospitality, retail, commercial, residential and public sectors. He is a registered architect with a particular interest in the interface between architecture and interior design, working to create spaces that endure, resonate and respond.

Mark regularly contributes to a range of design industry awards panels, speaker series and tertiary study engagements; actively engaging in peer support and mentorship opportunities across the design community. His engagement with the wider arts community includes his role as a board member of the not-for-profit Centre for Contemporary Photography.





MATTHEW BIRD

Matthew Bird is an architect and artist, and the founder of Studiobird, an award-winning Melbourne-based practice established in 2008. Studiobird operates at the crossroads of architecture, interior design, installation art, public art, and moving image. Bird's interdisciplinary approach merges visual art, design, architecture, and performance, creating innovative, interactive environments that reimagine ideas, symbols, and materials.

Studiobird's projects have been showcased in Art Guide Australia, Vogue Living, Architecture Australia, and Artichoke, and have earned prestigious awards, including those from the Green Room Awards, Australian Interior Design Awards, and the Australian Institute of Architects. Bird's work has been exhibited at major venues such as the National Gallery of Victoria, MONA, Venice Architecture Biennale, McClelland Gallery & Sculpture Park, MPavilion, and most recently at Samstag Museum of Art.

At Monash University, Bird applies his interdisciplinary expertise to teach speculative design, foster industry collaborations, and develop a strong research portfolio. He holds a Bachelor of Architecture (Hons) and a PhD from RMIT University, supervised by Emeritus Professor Leon van Schaik and Dr. Michael Spooner.



KALLIOPI VAKRAS

Awards Portfolio Director

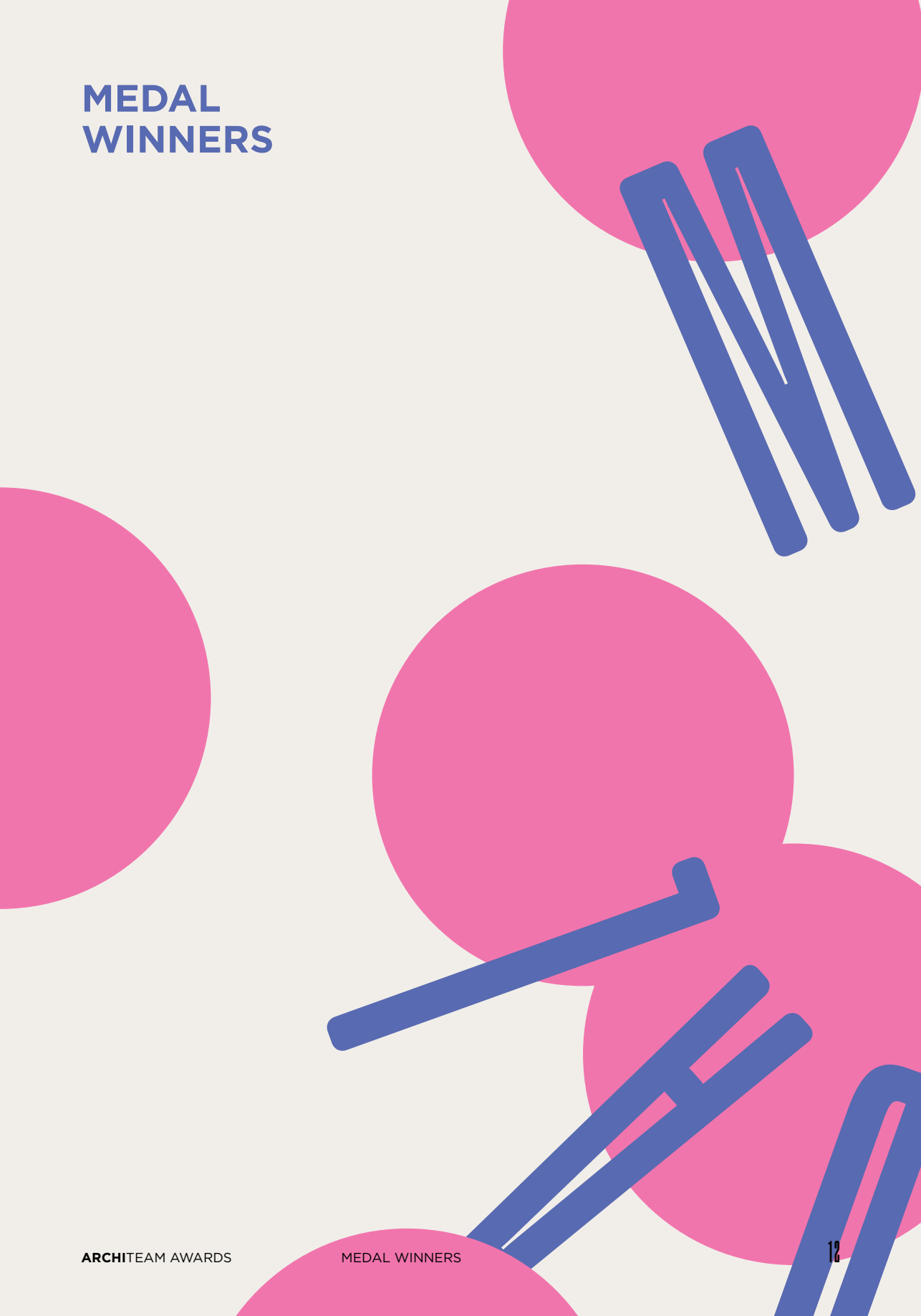
Kalliopi is the director of Kalliopi Vakras Architects, a small Victorian based architecture practice established in 2009 with a current focus on residential, early learning centres and Specialist Disability Accommodation (SDA) Housing.

The practice works directly with clients to develop a brief which responds to the unique solutions that each individual project requires. Specific elements such as client wants and needs, site context, historical and physical conditions of the site are explored in detail. The experience of the place along with the requirements of the client drive a design process that creates solutions that are not only visual, but multi-sensory and a joy to interact with. Each design response pays particular attention to the detailing, use of materials, experiential qualities of the space and the utilisation of natural light in an attempt to create an enjoyable, useable, poetic and sustainable space. KVA's works to date have included new single residences, residential alterations and additions, lower density multi-residential developments as well as hospitality, retail and early learning centres in both Melbourne and regional Victoria.

Kalliopi is a Registered Architect with the ARBV with 20+ years experience locally and internationally in the architecture field. She has also taught various design studios for 8+ years.

Kalliopi joined the ArchiTeam Board in 2020 starting as Director in charge of Advocacy and Member Services Portfolios. Kalliopi is currently Director in charge of the Awards Portfolio and is continuing to manage the Member Services Portfolio.

MEDAL WINNERS





Equity Office

Wangun Amphitheatre

WINNER



Designed as a new cultural hub for the Gunaikurnai community, the Wangun Amphitheatre strikes a beautiful balance between the natural environment, community needs and cultural heritage.

The project evokes an immediate sense of calm, groundedness and deep connection to place.

The use of natural and locally sourced materials creates a restrained palette that mingles the structure within its context, with steel columns echoing the tall eucalyptus trees that form a dense backdrop.





WINNER

ARCHITTEAM MEDAL



WINNER

COMMERCIAL, COMMUNITY
& PUBLIC AWARD



Representing the shields of the five Gunaikurnai tribes, the soft PTFE canopies provide shelter and playfully capture the movement of the filtered light through the trees.

The Wangun Amphitheatre demonstrates a considered response to the site integrating architecture and landscape, allowing access for all.

The strength of the design lies in its collaborative design process, extensive research and deep community engagement.

The outcome of years of effort, this humble project is an extraordinary example of cultural sustainability, where architecture becomes part of the story telling.

The jury unanimously recognised the Wangun Amphitheatre, the design team, and its community of collaborators, a deserving recipient of this year's ArchiTeam Medal.



Steffen Welsch
Architects

Life Cycle

WINNER

“Life Cycle” is a joyful small-footprint renovation that transforms a traditional suburban weatherboard into a resource-conscious family home.

Every design choice prioritizes reducing upfront carbon, minimizing energy use, and ensuring comfort, achieving a 79% reduction in life cycle emissions, compared to the benchmark.

The flexible layout is enhanced by carefully placed openings that balance natural light, ventilation, and connection to nature. Delightful sustainable features include a thermal chimney with a netted void above the dining area, edible gardens, and natural cooling from external shading and a fishpond next to the lounge.



Biodiversity is supported through responsible timber sourcing, indigenous plant selections, and minimal hardscaping-, which improves water infiltration and reduces radiant heat.

This project demonstrates how existing buildings can become resilient, climate-responsive sanctuaries that provide safe, comfortable, and healthy living. “Life Cycle” is an inspiring model for how cradle-to-cradle design thinking can positively shape the construction industry and our future communities.

Architecture architecture

Mackellar Primary School,
Accessible Playground

WINNER



Playground design is, surprisingly, an area of design that often finds itself wanting. Unsurprisingly, the key factor standing in the way of playgrounds as sites for magical thinking and multi-sensory experiences grounded in the educational concepts of encounter and discovery that they could be is a limited budget.

Architecture Architecture’s design for The Mackellar Primary School Accessible Playground accepts these constraints, reframing them as an opportunity for design-led exploration which demonstrates that exceptional, delightful design is achievable despite a limited budget.

Readily available storm water drains are transformed into tunnels; steel reinforcing bars become an archway for both children and plants to climb. Each structural element is embedded consciously into the landscape, creating a holistic, multi-sensory and universally accessible playground that responds thoughtfully to the varying needs of students who have different levels of mobility and physical ability.

In eschewing quotidian playground apparatus, this playground offers limitless opportunities for social inclusion, passive and active play, and imaginations to soar. It is everything it needs to be and nothing more.



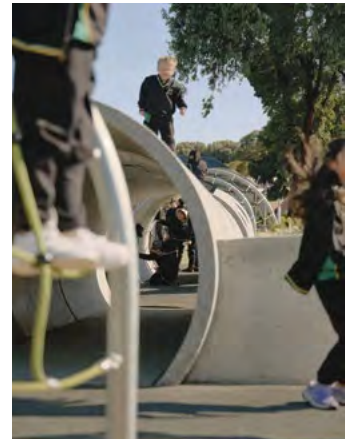
WINNER

SMALL PROJECT
MEDAL



COMMENDATION

COMMERCIAL, COMMUNITY
& PUBLIC AWARD



Shauna Trengrove

The Keep Cup
of Opportunity

WINNER



AS THE 2024 ARCHTEAM PASSIVHAUS SCHOLARSHIP!!

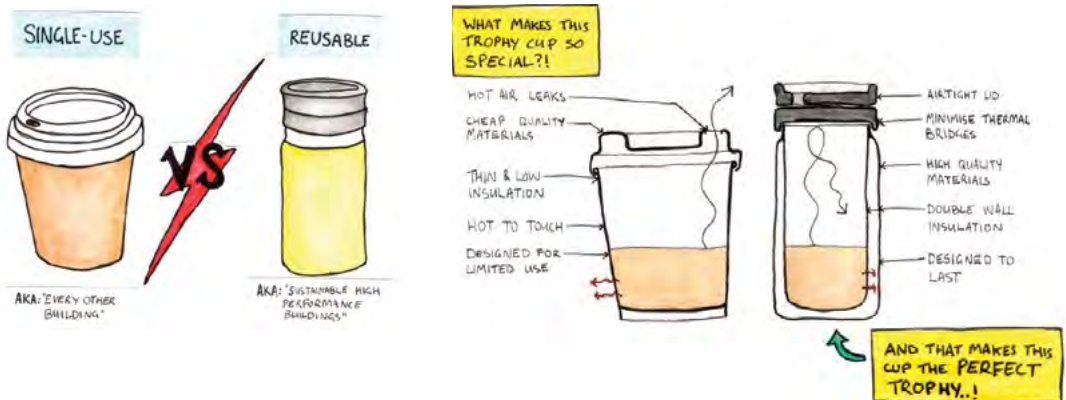
Not only can you throw this trophy into your bag each day, it keeps your coffee warm (or your iced coffee cold in summer), but most importantly you can demonstrate the principles of passive house to everyone in the cafe queue too!

WINNER
PASSIVHAUS
SCHOLARSHIP

The 'keep cup of opportunity' simply explains how functional, durable, and often beautifully designed the humble reusable coffee cup is, compared to a flimsy single-use cup. - It makes you wonder why we don't apply the same principles (of an airtight and highly

insulated envelope with minimal thermal bridges, resilient to outdoor temperature fluctuations) to all the buildings we occupy! It begs the question, why do we treat our coffee to better vessels than we build for ourselves to inhabit?

The judges were impressed by Shauna's beautifully hand sketched and watercoloured comic strip that communicates the concept of the trophy simply, while also in a fun and engaging way!





HIGH DEMAND FOR PASSIVHAUS DESIGNERS WITH SUBSTANTIAL MARKET ANNOUNCEMENTS

- 2 large scale build to rent projects announced in Victoria Oct 2024
- Over 300 projects in the process of Certification
- 63 target policy advisors and client groups up-skilled themselves in Passivhaus in 2024
- Increased airtightness in Australian construction codes requires better knowledge of supporting strategies such as airtightness.
- These announcements and others show the growth of Passivhaus in Australia and requirement of this knowledge base.

BECOME A CERTIFIED PASSIVHAUS DESIGNER

The Designer Course involves theory and calculations and applying all things architecture. It is for those wishing to model, design, and dive into the calculation of Passivhaus projects. Delivered online the last course for 2024 Commences 6th November.

6th November - online
\$150 discount with code
APA2024DesignerCourse

PRACTICAL PH TRAINING FOR ARCHITECTS

There's nothing worse than an architect that doesn't know how things come together on site. Practical Passivhaus workshop to provide hands-on experience covers essential installation protocols, tips, and tricks for key Passivhaus components such as windows, ventilation, and MVHR systems.

1st November - VIC
14th November - NSW
\$50 discount with code
APA2024PracticalTraining

Register here - www.passivhausassociation.com.au

RESIDENTIAL NEW
UP TO \$1.2M





Ben Lance Architects

Mount Macedon House

WINNER

The Mount Macedon House deploys a profoundly elegant use of minimal means, both in terms of the costs to build and in the deep efficiency of design strategies required to create a remarkable home for a mother and her visiting family.

Two paths of entry and movement are made available, one public, bringing guests directly in into the shared, social heart of the home through the cross section. A second private entry for the house's owner begins a procession along the 50m length of its rhythmic glazed façade, passing by the sleeping spaces and gently cascades down a sequence of small steps into the open planned and shared end of the house. Each step offers a spatial expansion, dignifying the importance of generosity in

the spaces in which we share with and host others, while also simply pairing the house to the gently fall of the site outside and culminating with a concrete seated threshold allowing a place to sit in the sun upon the house's edge.

This combination of a highly rational sectional profile, stretched to encompass and to give shape to the required program, is positioned to the south of its site and open to the north, providing both prospect and refuge. This is all that is done, and all that is required to provide a truly exceptional home.





 **WINNER**
RESIDENTIAL NEW
UP TO \$1.2M



COMMENDATION

MEGA

Little More House



COMMENDATION

RESIDENTIAL NEW
UP TO \$1.2M



COMMENDATION

Tom Robertson Architects

Life Down a Lane



 **COMMENDATION**
RESIDENTIAL NEW
UP TO \$1.2M

Wiesebrock Architecture
Forest Road House

COMMENDATION



 **COMMENDATION**
RESIDENTIAL NEW
UP TO \$1.2M



Back House
Tan Architecture



Brunswick Treehouse
Urban Creative Studio



Eagle House
Wexhaus

Forest Road House
Wiesebrock Architecture



COMMENDATION

RESIDENTIAL NEW
UP TO \$1.2M



Goldsmith House
Mills Gorman Architects



Inverloch Beach House
Birthisel Wittingslow
Architects



Design Democracy. Purposeful creativity.

We create brands, campaigns
and environments that improve
social and environmental outcomes –
local to global, strategy to creative.



Designers
of the 2024
ArchiTeam
awards

designdemocracy.com.au

Forest Road House
Wiesebrock Architecture



COMMENDATION

RESIDENTIAL NEW
UP TO \$1.2M



Goldsmith House
Mills Gorman Architects



Inverloch Beach House
Birthisel Wittingslow
Architects



FINALIST

RESIDENTIAL NEW
UP TO \$1.2M





Life Down a Lane
Tom Robertson Architects

COMMENDATION
RESIDENTIAL NEW
UP TO \$1.2M



Little Brick House
Ben Callery Architects

FINALIST
RESIDENTIAL NEW
UP TO \$1.2M

Little More House
MEGA



COMMENDATION

RESIDENTIAL NEW
UP TO \$1.2M



Mornington Townhouse
JKob Architects



Mount Macedon House
Ben Lance Architects



WINNER

RESIDENTIAL NEW
UP TO \$1.2M





Nut House
Nobel Carter Architects



Passive Pleat
STUDIOFANG



Krisna Cheung
Architects

Tea House

COMMENDATION



COMMENDATION

RESIDENTIAL NEW
OVER \$1.2M



Weaver+Co
Architects

Gable Park

COMMENDATION



COMMENDATION

RESIDENTIAL NEW
OVER \$1.2M



The Blairgowrie
Beach Club
**Bower Architecture
& Interiors**



Canopy CLT House
Still Space Architecture





Cloud Street
Steffen Welsch
Architects



Corbel House
Nick Bell Architects

Courtside House
Tom Robertson Architects



Dennis House
Olaver Architecture



FINALIST
RESIDENTIAL NEW
OVER \$1.2M





Gable Park
Weaver+Co Architects

COMMENDATION
RESIDENTIAL NEW
OVER \$1.2M



The GardenHaus
Enviroecture



Hopetoun House
YSC Architects

House for Life
Ben Callery Architects



Mornington House
Foomann Architects





Nilo Brighton
Tom Robertson Architects



Pigeon Pair
Inbetween
Architecture



Pippins
Webster Architecture
and Interiors

Rose + Pete's House
po-co Architecture



Tea House
Krisna Cheung Architects



COMMENDATION

RESIDENTIAL NEW
OVER \$1.2M



Calming shades.

Suggestive of morning mists, cool horizons and tranquil mountain eucalypts, Bluegum® is a mid-tone grey that brings calmness and serenity to an exterior palette.

Inspired by Australia's natural landscapes, COLORBOND® steel has the durability to perform in some of Australia's harshest conditions.

Discover COLORBOND® steel's new and refreshed palette @ colorbond.com/colours

Bluegum®

Colorbond®

Made by Australia

The COLORBOND® steel colour swatch shown has been reproduced to represent actual product colours as accurately as possible. However, we recommend checking your chosen colour against an actual sample of the product before purchasing as varying light conditions and limitations of the printing process may affect colour tones. COLORBOND®, BlueScope, the BlueScope brand mark and ® colour names are registered trade marks of BlueScope Steel Limited. © 2022 BlueScope Steel Limited ABN 16 000 011 058. All rights reserved.



**RESIDENTIAL
ALTERATIONS
& ADDITIONS
UP TO \$700K**

**ALTERATIONS
ALTERATIONS
ALTERATIONS
ALTERATIONS
ALTERATIONS
ALTERATIONS**

ADDITIONS

**Perversi-Brooks
Architects**

Little Brick Cottage –
South Hobart, Tasmania

WINNER

Little Brick Cottage, crafted by Perversi-Brooks Architects, exemplifies how thoughtful and imaginative design can flourish within modest constraints of scale and budget.

This project demonstrates an exceptional ability to harmonise with its heritage context while actively contributing to the evolving narrative of the area. Notably, the inverted triangulated roof pays homage to the iconic Mount Wellington, creating a striking silhouette.

The meticulous choice of materials and detailing in both the new additions and the renovated interiors showcases a refined aesthetic that elevates the overall experience. Excellent solar orientation introduces a dynamic range of lighting conditions, enriching the living environment.

The innovative boundary fence serves as a meaningful urban gesture, skillfully blending form, pattern, view and light, while cleverly incorporating a billboard. This design not only enhances the

streetscape but also stands as a contemporary bookend, offering a progressive vision for South Hobart.

In the face of the housing affordability crisis, Little Brick Cottage emerges as a beacon of adaptive reuse and intelligent spatial planning, signalling a new era for residential design. Its civic gesture to the adjacent high street further underscores its commitment to community engagement, making it a noteworthy contribution to the architectural landscape.

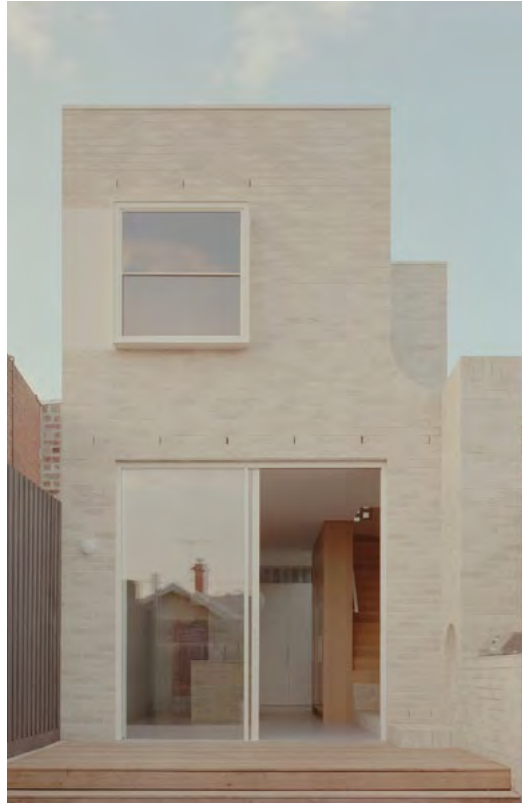




WINNER

RESIDENTIAL ALTERATIONS
& ADDITIONS UP TO \$700K

COMMENDATION



COMMENDATION

RESIDENTIAL ALTERATIONS
& ADDITIONS UP TO \$700K



COMMENDATION



COMMENDATION

RESIDENTIAL ALTERATIONS
& ADDITIONS UP TO \$700K



COMMENDATION

Michael Ong Design Office

Park St House



COMMENDATION

RESIDENTIAL ALTERATIONS
& ADDITIONS UP TO \$700K



Anglesea House 8
Emma Mitchell Architects



Austin House
Fowler and Ward



FINALIST

RESIDENTIAL ALTERATIONS
& ADDITIONS UP TO \$700K



Bob's Bungalow
Blair Smith Architecture
Commendation



COMMENDATION

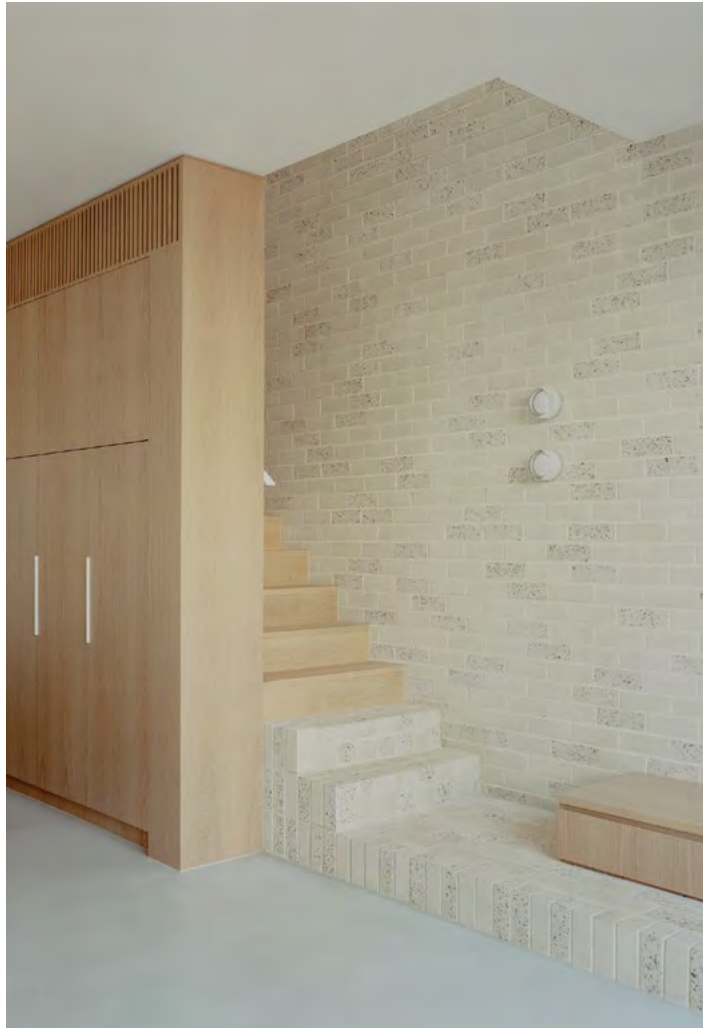
RESIDENTIAL ALTERATIONS
& ADDITIONS UP TO \$700K

Brunswick West House
NARDEL Architects



COMMENDATION

RESIDENTIAL ALTERATIONS
& ADDITIONS UP TO \$700K

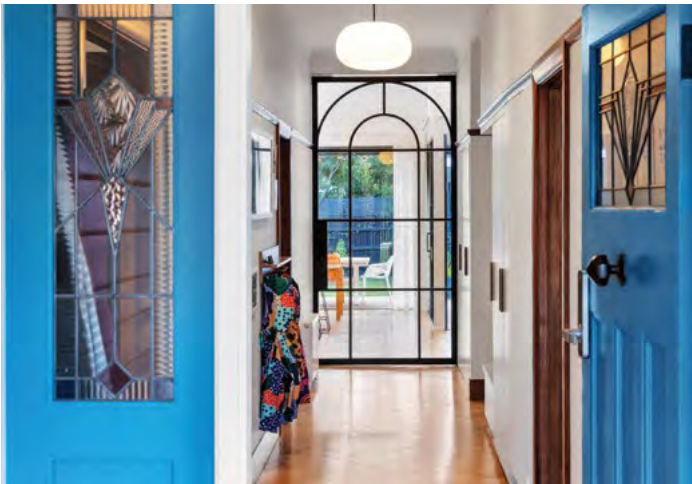


Cornerstone
Loupe Architecture





Crown Road
**Jane Cameron Architects
& Architect Hewson**



Cruickshank House
Yarraville
Chadwick Architects



Devon House
**Ursula Chandler
Architects**

Garden Studio
Apparte



Itty Bitty House
Sky Architect Studio





Heartbeat House
Mihaly Slocombe
Architects



FINALIST

RESIDENTIAL ALTERATIONS
& ADDITIONS UP TO \$700K

adr

australian design *review*

House in Lilyfield
Charmaine Pang
Architect



FINALIST

RESIDENTIAL ALTERATIONS
& ADDITIONS UP TO \$700K



Kirribilli Downsize
Apartment
Tsai Design



FINALIST

RESIDENTIAL ALTERATIONS
& ADDITIONS UP TO \$700K





Little Brick Cottage
Perversi-Brooks Architects



WINNER

RESIDENTIAL ALTERATIONS
& ADDITIONS UP TO \$700K



Little Green Cabin
Cloud Dwellers



Little OG
mcmahon and nerlich

Loos Matters
Office of Culture,
Technology and
Architecture (OCTA)



Mini More Terrace
Molecule Studio



Murrumbeena House
Michael McManus
Architects





The Nest
Atlas Architects



No Rezzavations
Sarah Lake Architects



Northcote Terrace
Evisa

Ocean Grove House
Wiesebrock
Architecture



Park St House
Michael Ong Design Office



COMMENDATION

RESIDENTIAL ALTERATIONS
& ADDITIONS UP TO \$700K



Patio and Pavilion
Justin Mallia Architecture





Pink House
Nobel Carter Architects



Pleated House
Naomi Brennan Architects



Preston House
Dion Keech Architects

Primbee House
Nash Architects



Seddon House
Olaver Architecture



St. Kilda Micro Sanctuary
tsai Design





This is Rina, Reservoir
Pepper & Well



Totoro's Pool
Walless Architecture



Tucks House
Richard Kerr Architecture

Whitehouse Prahran
Nervagna Reed
Architecture



Yarra House
Bryant Alsop



The leading destination for
roofing and architectural
panel solutions, quality, and
reliable service you can trust.



**ROOFING &
BUILDING SUPPLIES**

no1roofing.com.au



**RESIDENTIAL
ALTERATIONS
& ADDITIONS
\$700K TO \$1.2M**

**ALTERATIONS
& ADDITIONS**

Stejskal Architecture

Hale Street

WINNER

The jury was deeply impressed by the strategic and experiential skill of the Hale Street Alterations and Additions.





WINNER

RESIDENTIAL ALTERATIONS
& ADDITIONS \$700K TO \$1.2M



A desire to accommodate aging in place and mobility disadvantaged friends became a way to liberate the plan for everyone - organising living around a ramped spiral that curls around a garden courtyard, culminating in an elevated living room and deck.

The material palette of the building is humble, engaging and smart. Hempcrete walls offer humidity control, indoor air quality, thermal insulation and carbon sequestration. Double glazed windows ensure a regulated environment is available for older people. Threshold spaces surround this core and hold ramps and verandas for protected

outdoor living. This layer is fashioned from timber and tin, with cyclone mesh screening and simple battens for security and subtle separation. The ensemble is a relaxed, compact and comfortable arrangement that offers multiple, rich choices for retreat or engagement with its surrounding context.

Victoria Merrett Architecture

Marianne House

COMMENDATION



COMMENDATION

RESIDENTIAL ALTERATIONS
& ADDITIONS \$700K TO \$1.2M





Borrowed Garden House
Topology Studio



Brunswick Galley House
Topology Studio

Campbell Residence
STUDIOFANG



Cereus House
Circle Studio Architects





Fitzroy North Terrace
Field Office Architecture



Glenmorgan
Bryant Alsop



Habitat House
Ben Callery Architects

Hale Street
Philip Stejskal Architecture



WINNER

RESIDENTIAL ALTERATIONS
& ADDITIONS \$700K TO \$1.2M



Hawthorn East
MDG Architects



Layered House
Louise Goodman Architects





Life Cycle
Steffen Welsch Architects



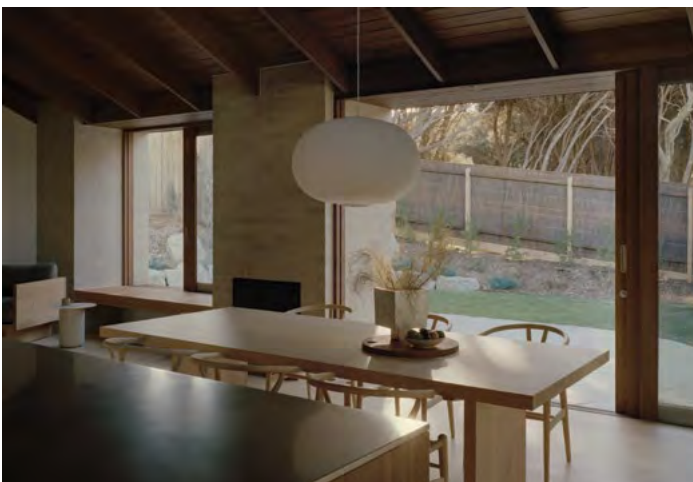
FINALIST

RESIDENTIAL ALTERATIONS
& ADDITIONS \$700K TO \$1.2M



WINNER

SUSTAINABILITY MEDAL



Marianne House
Victoria Merrett Architecture



COMMENDATION

RESIDENTIAL ALTERATIONS
& ADDITIONS \$700K TO \$1.2M

North Bondi House
Studio Arkive



Paddington Terrace
Rosstang Architects





Silhouette House
Inbetween
Architecture



FINALIST

RESIDENTIAL ALTERATIONS
& ADDITIONS \$700K TO \$1.2M



Windsor Residence
Warc Studio

**RESIDENTIAL
ALTERATIONS
& ADDITIONS
OVER \$1.2M**



ADDITIONS AND SUBTRACTIONS

ADDITIONS
AND
SUBTRACTIONS

Architecture architecture
Skygarden

COMMENDATION



COMMENDATION

RESIDENTIAL ALTERATIONS
& ADDITIONS OVER \$1.2M





Big Gore
Tom Robertson Architects



Darley Road, Manly
Quigley Architecture + Kraft



Davis
Blur Architecture

Deco House
Pop Architecture
& Karyne Murphy Studio



Fringe Dweller
Mihaly Slocombe
Architects



FINALIST

RESIDENTIAL ALTERATIONS
& ADDITIONS OVER \$1.2M





Grace Park House 2.0
Poly Studio



Marine House
Bryant Alsop



Quamby
Bryant Alsop

Skygarden
Architecture architecture



COMMENDATION

RESIDENTIAL ALTERATIONS
& ADDITIONS OVER \$1.2M



Verandah House,
Merricks Beach
Ben Callery Architects





Our Services

- Electrical Services
- Mechanical Services
- Hydraulic Services
- Fire Protection Services
- Environmentally Sustainable Design (ESD)
- Vertical Transportation

Empowering Excellence in Building Services Engineering

Meet the Directors



**Suju
James**

0403 528 471



**Alex
Lee**

0468 303 328



**Josiah
Zhou**

0413 151 506

A 4/17-19 Miles St, Mulgrave, VIC 3170
E projects@essjayce.com.au
P 03 9017 3744
W www.essjayce.com.au

**Please visit
our website
to find out
more:**



**COMMERCIAL,
COMMUNITY
& PUBLIC**

COMMERCIAL

COMMUNITY & PUBLIC

Equity Office

Wangun Amphitheatre

WINNER

Wangun Amphitheatre is an exemplar of culturally responsive co-creation. The project deftly creates an accessible, all-weather facility for the community to come together and is the first self-determined cultural venue for Gunaikurnai communities.





WINNER

COMMERCIAL, COMMUNITY
& PUBLIC AWARD



WINNER

ARCHITTEAM MEDAL

It shows a deeply considered response to both brief and site, delivering a captivating and thoughtful architectural solution where the whole is so much more than the sum of its parts.

The PTFE canopies which collectively define the amphitheatre, and symbolise the five Gunaikurnai clan shields, are delicate, elegant and playful; never quite touching each other whilst

providing protection from the elements. What could easily have been a perfunctory structural solution manages to be both sculptural and functional conveying an effortless intuition.

The project demonstrates the reward for an investment in extensive and deep community engagement, creating a place of both beauty and purpose.

Architecture
architecture

Mackellar Primary
School, Accessible
Playground

COMMENDATION



COMMENDATION

COMMERCIAL, COMMUNITY
& PUBLIC AWARD



WINNER

SMALL PROJECT
MEDAL



Fowler and Ward

Milanote
Headquarters

COMMENDATION



COMMENDATION

COMMERCIAL, COMMUNITY
& PUBLIC AWARD



The Beehive Hotel
underwood



Brandon Park
Primary School
Architecture
architecture



FINALIST

COMMERCIAL, COMMUNITY
& PUBLIC AWARD





Brighton Apartments
Merrylees Architecture



Centred
Sarah Lake Architects



FINALIST

COMMERCIAL, COMMUNITY
& PUBLIC AWARD

Claude & Me
Jewellery fit out
Skewed
Architecture



CY Office
Kyearn Architecture





FOMO Cinemas
ITN Architects



Gertrude Hotel
Pepper & Well

Heritage Streetscape
Primary School
Jacinda Sadler Architects



Hero Office
Jost Architects
with Brahman Perera





Kiewa Sports Pavilion
Mihaly Slocombe Architects



Mackellar Primary School,
Accessible Playground
Architecture architecture



COMMENDATION

COMMERCIAL, COMMUNITY
& PUBLIC AWARD



WINNER

SMALL PROJECT
MEDAL

Milanote Headquarters
Fowler and Ward



COMMENDATION

COMMERCIAL, COMMUNITY
& PUBLIC AWARD



Olivine Community
Pavilion
Canvas Projects



FINALIST

COMMERCIAL, COMMUNITY
& PUBLIC AWARD





Original Chai Co
andever



Queen St Legal Offices
Fred Architecture

Replica Autoprogettazione
Complete Thought Studio



Royal Hobart Hospital
Liverpool Clinics
Pop Architecture, JAWS
Architects & NTC Architects



Resene

the paint the professionals use

RESENE HAS A WIDE RANGE OF PRODUCTS,
SERVICES AND TOOLS TO SUIT COMMERCIAL,
INDUSTRIAL AND RESIDENTIAL PROJECTS

- LARGE PRODUCT RANGE SUITABLE FOR ANY PROJECT
- MORE THAN 6000 STANDARD COLOURS
- EXCELLENT ADVICE AND CUSTOMER SUPPORT
- TECHSPEC ONLINE SPECIFICATION
- COLOR MATCHING
- LARGE WALLPAPER RANGE AVAILABLE
- 30+ RESELLERS ACROSS VICTORIA AND TASMANIA

[CLICK HERE FOR MORE INFORMATION](#)

VICTORIA COLORSHOPS

ABBOTSFORD

376 JOHNSTON STREET,
ABBOTSFORD

PH: (03) 7032 2938

ABBOTSFORD@RESENE.COM.AU

HUNTINGDALE

UNIT 3, 72-76 FENTON STREET,
HUNTINGDALE

PH: (03) 8526 0111

HUNTINGDALE@RESENE.COM.AU

NIDDRIE

400 KEILOR RD,
NIDDRIE

PH: (+61) 3 7032 7085

NIDDRIE@RESENE.COM.AU

St Clare's Primary School,
Thomastown – Harmony
Building & New School Entry
MUSK Architecture Studio



Tiny Tails Retreat
MET Architecture

 **FINALIST**
COMMERCIAL, COMMUNITY
& PUBLIC AWARD





Womindjika Wanyanimbik
Wayawan
EBD Architects



Zen Den Legal Offices
Fred Architecture

Wangun Amphitheatre
Equity Office



WINNER

COMMERCIAL, COMMUNITY
& PUBLIC AWARD



WINNER

ARCHITTEAM MEDAL



**Bookshop
by Uro.**

Art
Architecture
Design
Urbanism

5/30 Perry Street
Collingwood Yards
VIC 3066
p: 0466 901 200
w: bookshopbyuro.com

ComfortEDGE™



Fabricator:
Coastline Architectural Windows



AFFORDABLE, ENERGY EFFICIENT, ELEGANCE

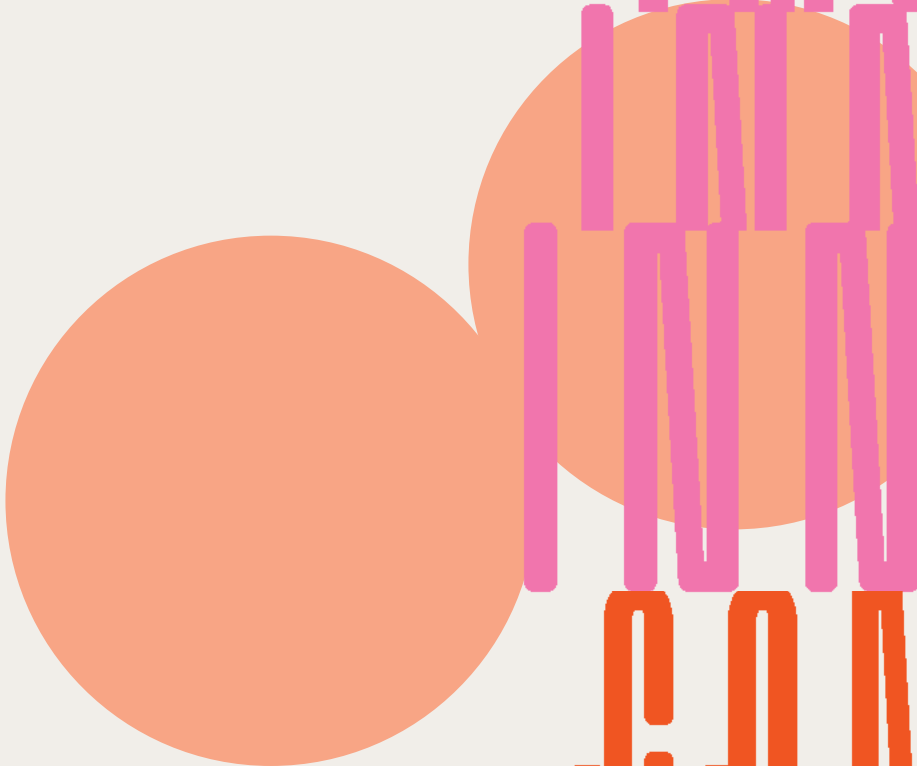
- Double glazed windows and doors
- Superior energy performance
- U-Values as low as 1.9
- Embedded framing for clean sightlines
- Australian designed & manufactured



FIND A FABRICATOR:
awsaustralia.com.au/fabricator-listing

AWS
ARCHITECTURAL WINDOW SYSTEMS

**INNOVATION AND
CONTRIBUTION**



**CON
CON
CON**



CONTRIBUTION

TRIBUTION

INNOVATION & CONTRIBUTION AWARD

This year, there were no winners or commendations in the Innovation & Contribution category as the only entry, while commendable, did not sufficiently demonstrate a contribution to industry discourse beyond the design and production of buildings.

The jury sought work that sparked broader conversations and influenced the wider architectural landscape. We strongly encourage members to nominate either a member, or a group that includes a member; or a special initiative that is outside the ArchiTeam for special recognition next year!



Hardie™ Architectural Collection

Experience versatility
like never before.

Stria™ Cladding

It's Possible™ to set new standards in modern home design with the Hardie™ Architectural Collection. Bring the best of your designs to life with ease thanks to the design versatility of this curated cladding collection.

Hardie™ Fine Texture Cladding



Discover More



Make your design statement with **Hardie™ Architectural Collection.**

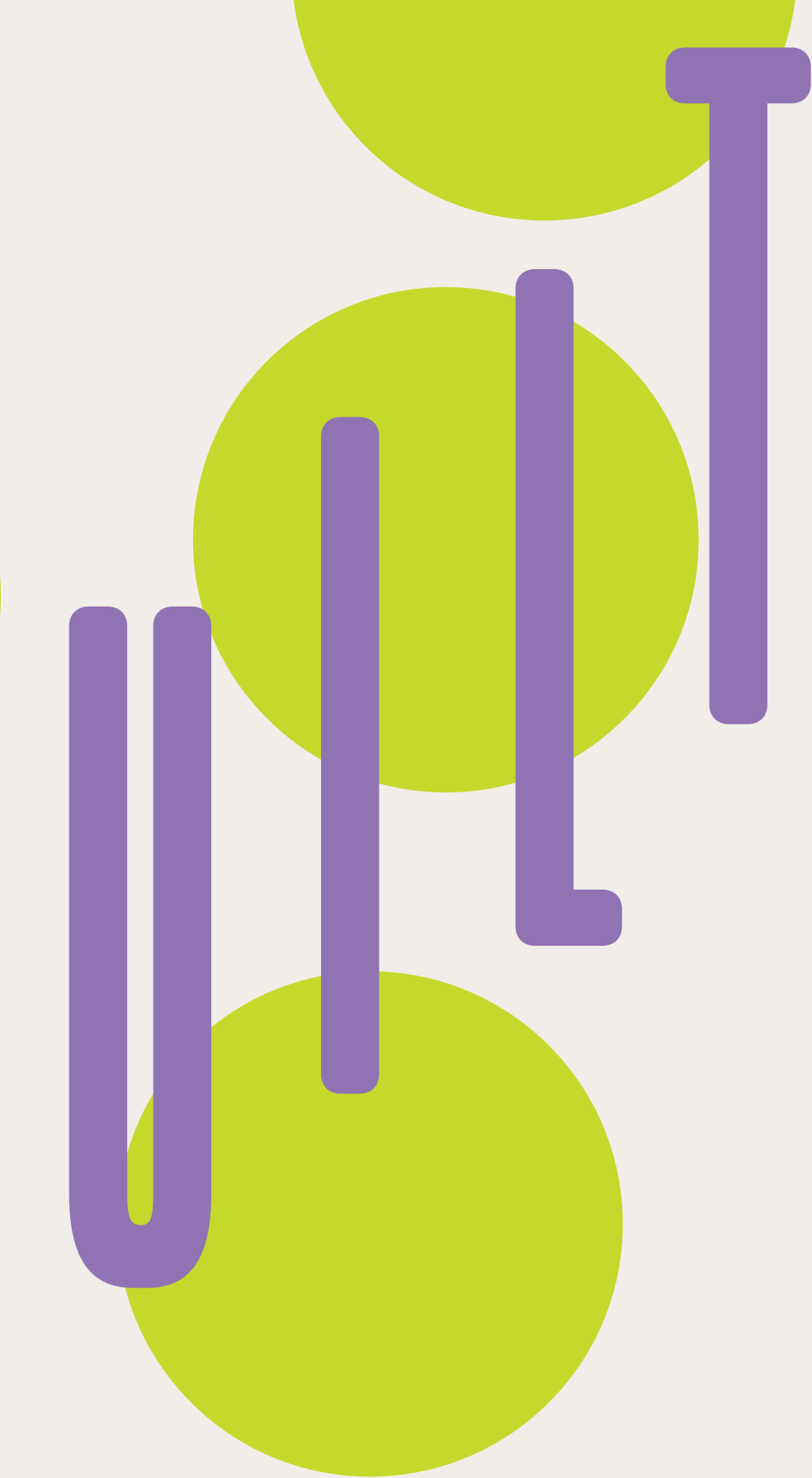
©2024 James Hardie Australia Pty Ltd ABN 12 084 635 558. ™ and ® denote a trademark or registered trademark owned by James Hardie Technology Ltd.



UNBUILT



UNBUILT



Greens Beach Retreat
Field Office Architecture



Office of Culture, Technology
and Architecture (OCTA)
Office of Culture, Technology
and Architecture (OCTA)





Spearhead
Cheg Architecture



Sturt St Apartment
Johnson Architects



Take Up Your Cross - Holy
Trinity Lutheran Church
Sarah Lake Architects

 **FINALIST**
UNBUILT

THANK YOU

The ArchiTeam Board would like to thank all members who have contributed entries to the ArchiTeam Awards 2024

ArchiTeam would like to extend its gratitude to this year's Awards Chair Imogen Puller and the following 2024 Awards Judges.

Matthew Bird
StudioBird (VIC)

Kim Bridgland
Edition Office (VIC)

Laura Harding
Hill Thalys (NSW)

Lara Maesele
Tanner Architects (TAS)

Mark Simpson
DesignOffice (VIC)

Jessica Agoston
Managing Editor,
Niche Media / ADR (VIC)

Additionally, ArchiTeam would like to acknowledge the support of this year's sponsors as well as the invaluable creative talents of Sonia Post and her team at Design Democracy and Eli Kemp for producing such wonderful trophies.

ArchiTeam is proudly a cooperative and thanks all members for their ongoing contribution in ensuring the community and spirit of the organisation.

Further information on ArchiTeam or to view our members profiles please visit **architeam.net.au**



